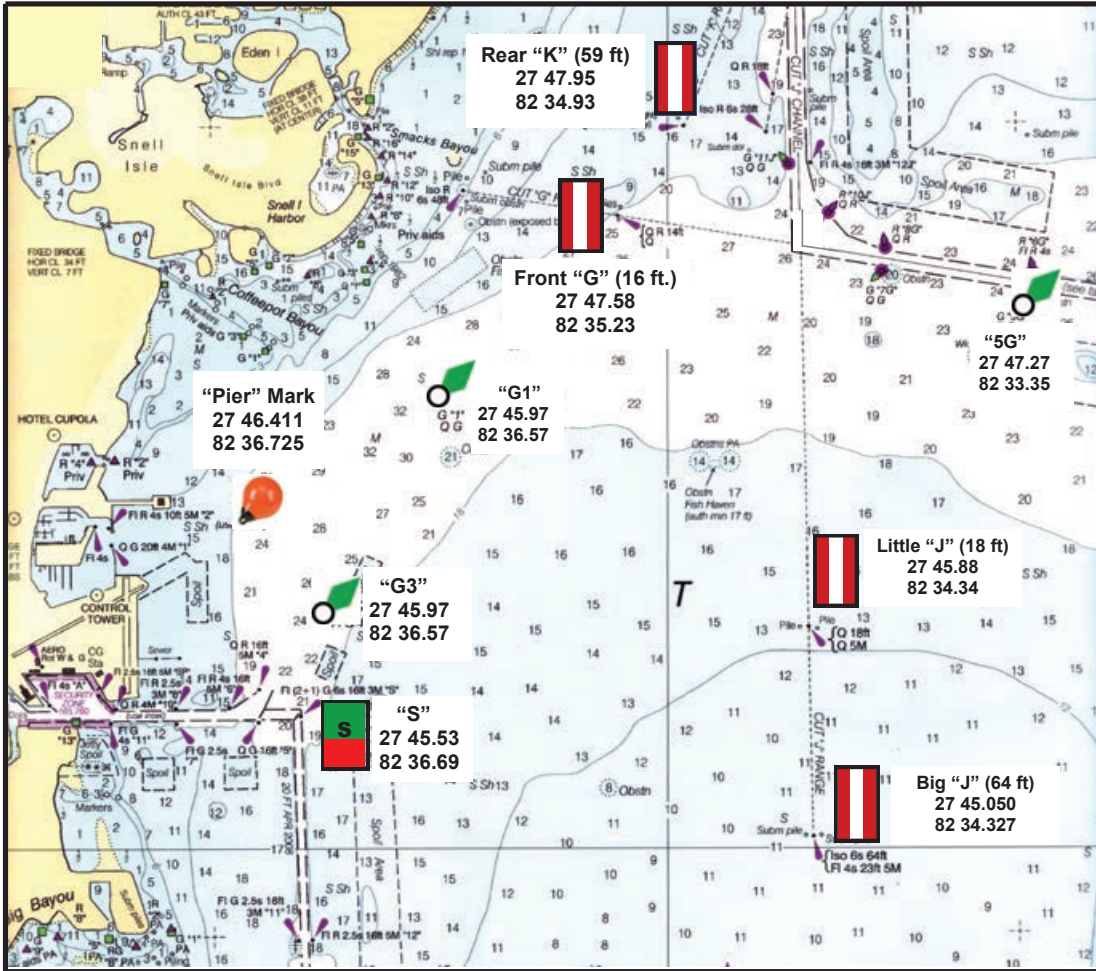




# SPSA Racing

## Race Area and Starting Sequence



**5 MINUTES TO START**  
Warning—1 sound, Class flag raised



**4 MINUTES TO START**  
Preparatory—1 sound, P flag raised



**1 MINUTES TO START**  
One minute—1 long sound, P flag lowered

**START**

**0 MINUTES TO START**  
Starting—1 sound, Class flag lowered

For Informational Purposes Only. Not for Navigation. To be used with proper navigational charts.



# SPSA Marks

**G '1'**



**G '3'**



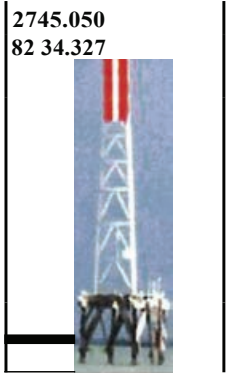
**S (16ft)**



**Little 'J' (18ft)**



**Big 'J' (64ft)**



**Front 'G' (14ft)**



**Rear 'K' (52ft)**



**Pier- Start Drop 'H' Mark**



Nominal location: 2746.411  
82 36.725  
Approximately 1/2 mile east of pier. Race Committee has discretion to change location.

**G '5'**





## RACING MARKS BEARINGS AND DISTANCE

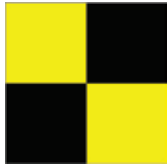
TO MARK										
	G1	G3	S	Little J	Big J	Front G	Rear K	Pier Mark*	G5	
FROM MARK	G1	208° 0.97 nm	203° 1.41 nm	122° 1.79 nm	139° 2.36 nm	045° 1.06 nm	043° 1.51 nm	238° 0.72 nm	080° 2.45 nm	
G3	028° 0.97 nm	045° 0.45 nm	192° 0.45 nm	093° 1.98 nm	115° 2.21 nm	037° 2.00 nm	037° 2.45 m	332° 0.45 m	066° 3.14 m	
S	023° 1.41 nm	12° 0.45 nm	045° 0.45 nm	080° 2.10 nm	103° 2.15 nm	032° 2.42 nm	033° 2.87 nm	351° 0.87 nm	060° 3.42 nm	
Little J	302° 1.79 nm	273° 1.98 nm	260° 2.10 nm	080° 2.10 nm	179° 0.86 nm	335° 1.85 nm	346° 2.11 nm	281° 2.17 nm	033° 1.62 nm	
Big J	319° 2.36 nm	295° 2.21 nm	283° 2.15 nm	359° 0.86 nm	086° 0.86 nm	343° 2.66 nm	350° 2.95 nm	298° 2.53 nm	021° 2.38 nm	
Front G	225° 1.06 nm	217° 2.00 nm	212° 2.42 nm	155° 1.85 nm	163° 2.66 nm	045° 0.45 nm	036° 0.45 nm	231° 1.77 nm	101° 1.69 nm	
Rear K	223° 1.51 nm	217° 2.45 nm	213° 2.87 nm	166° 2.11 nm	170° 2.95 nm	216° 0.45 nm	228° 2.22 nm	228° 2.22 nm	117° 1.55 nm	
Pier Mark*	058° 0.72 nm	152° 0.45 nm	171° 0.87 nm	101° 2.17 nm	118° 2.53 nm	051° 1.77 nm	048° 2.22 nm	074° 3.11 nm	074° 3.11 nm	
G5	260° 2.45 nm	246° 3.14 nm	240° 3.42 nm	213° 1.62 nm	201° 2.38 nm	281° 1.69 nm	297° 1.55 nm	254° 3.11 nm		

- Compass bearings are True (not Magnetic)
- Pier\* mark is an orange buoy "drop" mark.
- The nominal location used here is 27° 46.41'N, 82° 36.725'W – approx. 0.5 miles directly east of the pier.
- Actual bearings and distances to and from the Pier Mark may vary from the values in this table. (2021)



# SPSA Flags

---



## Come Within Hail

'L' Flag. Come within hail of committee boat, or follow if they are underway.



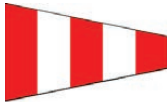
## Individual Recall

'X' Flag. Indicates that a boat has crossed the start line early. May be accompanied by a call on the radio indicating the offending boats.



## General Recall

'1<sup>st</sup> Substitute' Flag. All boats return and a new start sequence will begin.



## Postpone

'AP' Flag. Race is postponed.



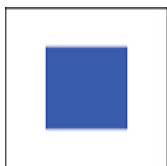
## Race Abandoned

'N' Flag. The race is abandoned.



## All Races Abandoned

'A' Flag. All races for the day are abandoned. Flown with the 'N' flag.



## Shortened Course

'S' Flag. Course is shortened. Finish line is now between the nearby mark and the boat flying this flag.