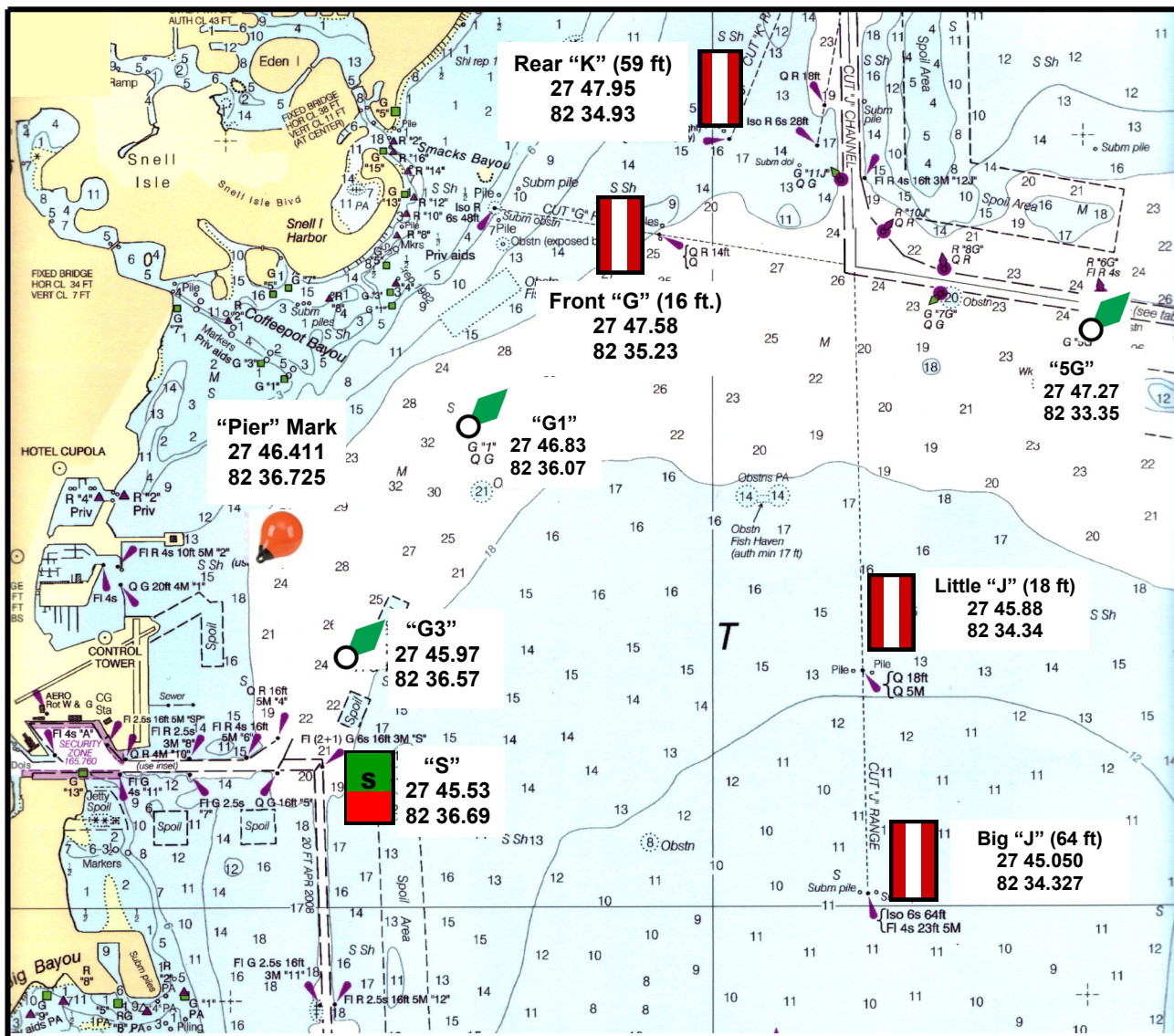




SPSA Racing

Race Area and Starting Sequence



5 MINUTES TO START

Warning—1 sound, Class flag raised



4 MINUTES TO START

Preparatory—1 sound, P flag raised



1 MINUTES TO START

One minute—1 long sound, P flag lowered

START

0 MINUTES TO START

Starting—1 sound, Class flag lowered

For Informational Purposes Only. Not for Navigation. To be used with proper navigational charts.



SPSA Marks

G '1'

27 46.835
82 36.073



G '3'

27 45.984
82 36.583



S (16ft)

27 45.542
82 36.688



Little 'J' (18ft)

2745.905
82 34.349



Big 'J' (64ft)

2745.050
82 34.327



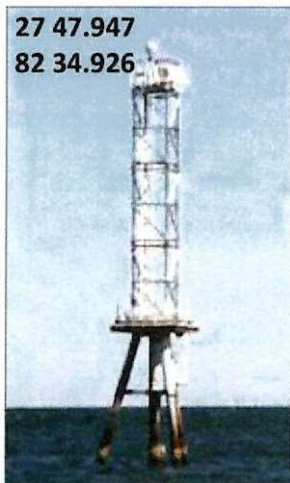
Front 'G' (14ft)

2747.581
82 35.228



Rear 'K' (52ft)

27 47.947
82 34.926



Pier- Start Drop 'H' Mark



Nominal location: 2746.411
82 36.725
Approximately 1/2 mile east of
pier. Race Committee has
discretion to change location.

G '5'

27 47.263
82 33.354

