

Course: 5.6 NM

Start at "B"

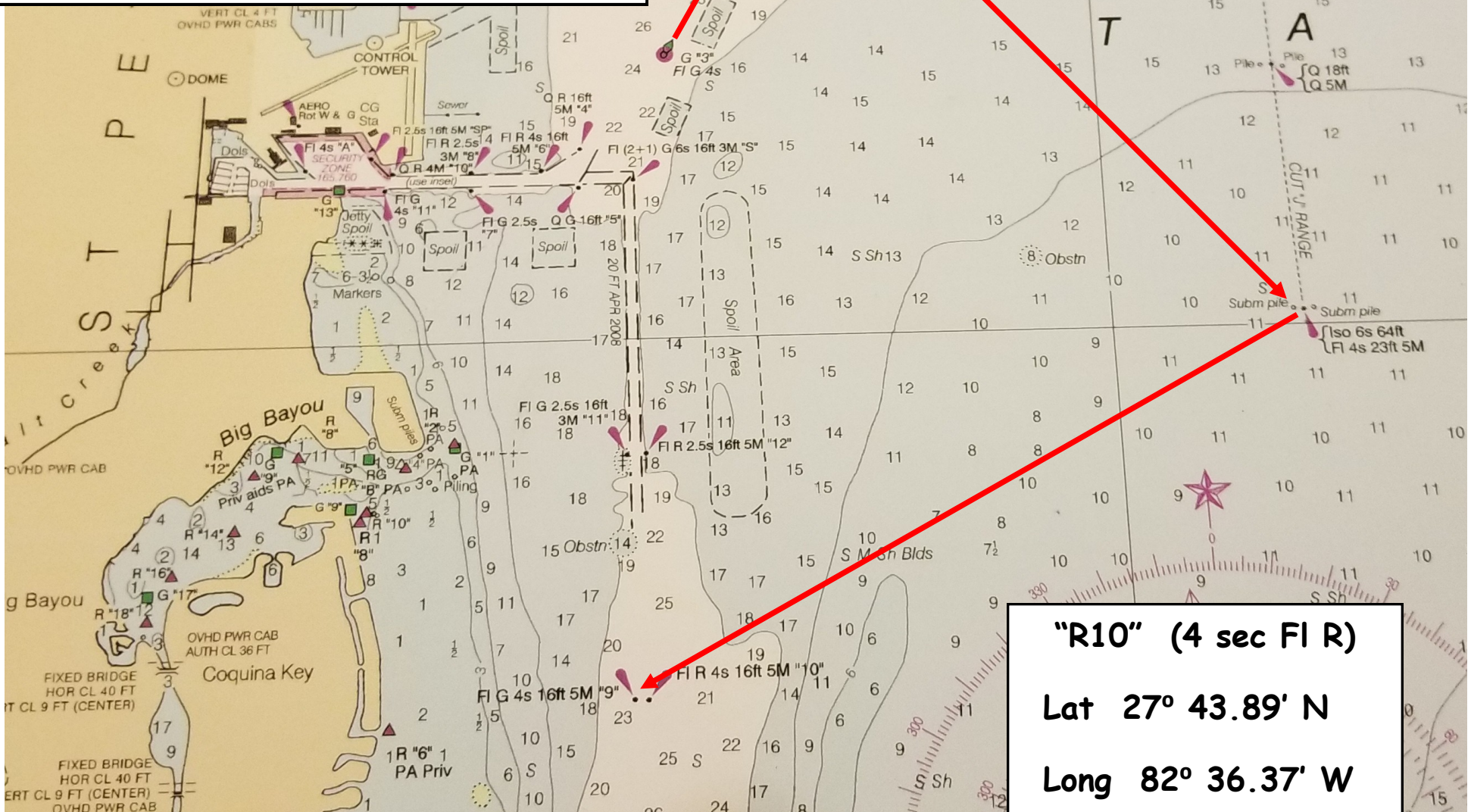
Go 033° for .97 NM to "A" (G1)

Go 144° for 2.36 NM to "E" (Big J)

Go 240° for 2.33 NM and Finish between
"G9" (4 sec FI G) and "R10" (4 sec FI R)



Full Moon Pursuit
January 11, 2020



"R10" (4 sec FI R)

Lat 27° 43.89' N

Long 82° 36.37' W